



WEDAK PUMPS

Shine your Flow



**Wedak Horizontal
Multistage Pumps
- 50Hz**

www.wedakpumps.com

COMPANY PROFILE

We, **Wedak Pumps** is an outcome of 15 years of expertise in providing water pumping solutions. We are committed in providing pumping solutions to major sectors like Agriculture, Residential, Buildings, commercial, Industries and waste water by our world-class Submersible, Surface and Solar pumps, motors and accessories. We supply pumps suitable for the applications like pressure boosters and waste water transfers as well.

Wedak Pumps is always keen that our products are more efficient, effective and user friendly. Technology & Innovation are our key considerations and this keeps us in providing advanced pumping solutions to end users and keeps our products one step ahead in the industry.

With the noble vision of establishing its name, known for Trust & Quality across the globe, the company's Principles & Policies are carefully framed & implemented.

We regularly find the room for improvisations in products & process and this makes our product more reliable & flawless. We believe in continual improvement and update ourselves instantly to be the best in industry. We share the credit of our success with our entire supply chain & channel partners. Today we have good network of channel partners, who promotes our brand.

Customers are soul of our business, the whole Wedak Team runs round the clock for the only cause called "customer satisfaction" and see them smiled through our products & services



MISSION

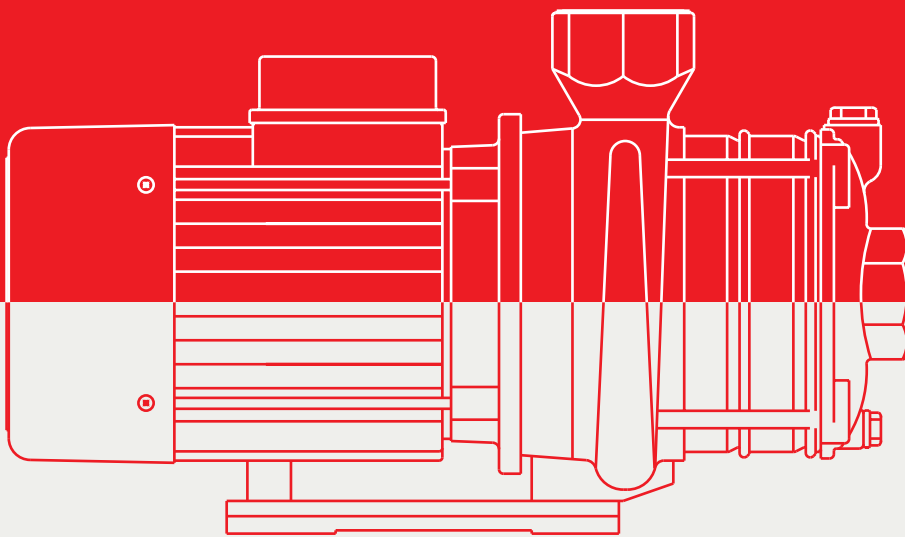
To offer our customers world-class pumping solutions, satisfy them in all the aspects and see them smiled



VISION

To be a Global symbol of Trust & Quality in providing Advanced Pumping solutions.

HORIZONTAL M	ULTISTAGE P	UMPS
Product Information		05 - 07
Performance & Dimensional Details		08 - 21



❖ Horizontal
Multistage Pumps

HM Series - 50Hz

Wedak's **HM - Series** pumps are Horizontal Multistage Pumps, designed for clear liquid, high pressure applications. These Pumps are of centrifugal types, accommodating mainly Radial flow impellers according to the required Head & Flow. The Horizontal construction and compact design result in space saving. The pump is driven with energy efficient IE1, IE2, IE3 motors. The motor winding designs are compactible to VFD operation and makes preferable to use it with the latest control systems. These pumps are applicable for both normal temperature & high temperature applications with appropriate change in the MoC of critical spare parts like mechanical seal etc. The precise design, materials combination, manufacturing process and stringent quality assurance procedures ensure high quality performance and durability of the pump. These pumps are available in Cast Iron, SS 304 & SS 316 constructions, which are called as HMC, HMS and HMN constructions respectively and the SS 304 fabricated doom type construction is called as HMD.

Applications

- ◆ Domestic Pressure Boosting Systems
- ◆ Fountain
- ◆ Gardening
- ◆ Car Washing

Features

- ◆ Optimized Design
- ◆ Compactible to VFD operations
- ◆ Different types of MoC
- ◆ Normal & High temperature designs



Curve Conditions

Hydraulic Performances of the pumps are same for all types Materials of constructions [HMC, HMS, HMN & HMD constructions] | The given performances are for the clear water of specific gravity 1 | The given the performances are for the ideal conditions the actual performance may vary according the field parameters The performances are applicable for the nominal speed of 2900rpm The thick lines in the curves indicates the recommended operative region and the thin lines are non-operative regions The Group performance curves are just an indicative and to locate the tentative family curve | Refer the individual curves for prompt selection of models.

In the view of our continuous developments the given information / description / specifications / illustrations are subject to change without prior notice.

HORIZONTAL MULTISTAGE CENTRIFUGAL PUMPS HM SERIES

Technical Specifications

Power Range	0.37 - 4 kW / 0.5 - 5.5 HP
Version	1Ph - 230V, 50Hz AC
	3Ph - 380 -415V, 50Hz AC
Speed	2900 rpm
Protection	IP 55
Insulation Class	F Class
Duty	S1 (continuous)
Direction of Rotation	Clockwise viewed from driving end
Sealing	Mechanical Seal
Max. Liquid Temperature	Std.: -15 to +70°C, High Temp.: upto 104°C
Max. Ambient Temperature	50°C
Max. Operating Pressure	10 Bar
Flow Range	upto 28m ³ /h
Head Range	upto 65m

Liquid Characteristics : Applicable for Clear, non-aggressive liquids free from solids / foreign particles

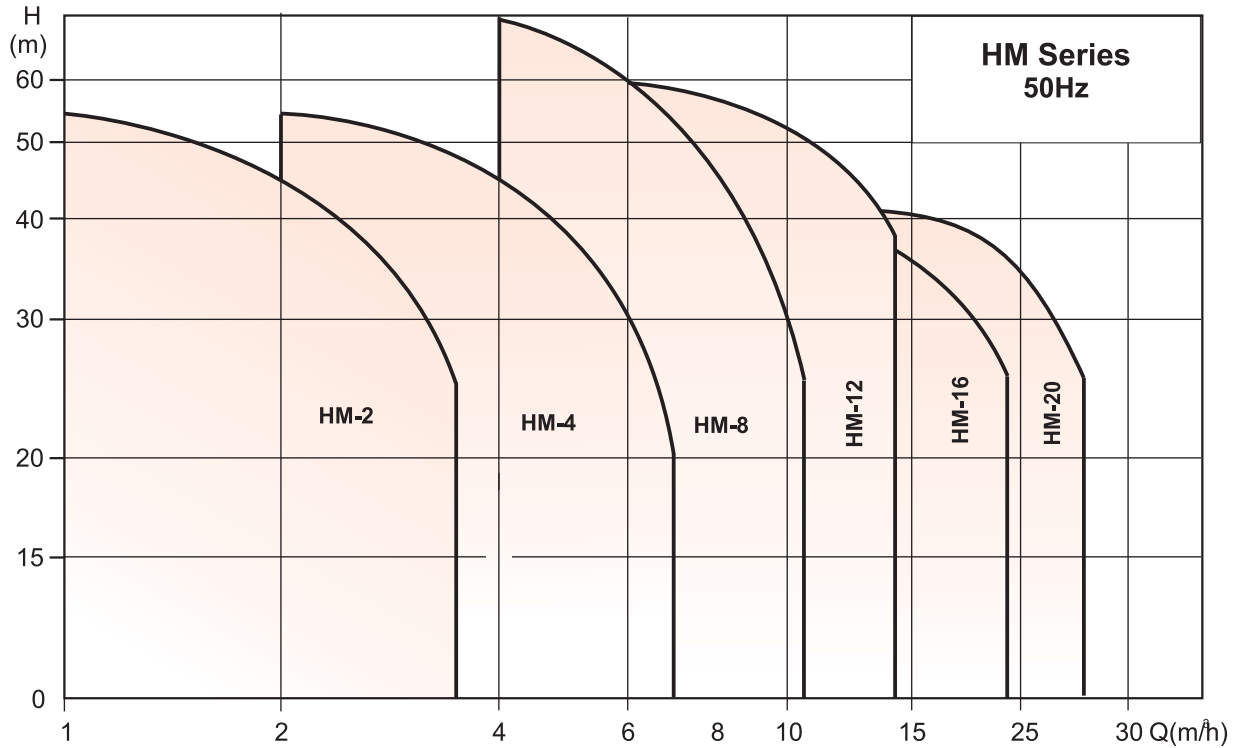
Model Identification Code

X X X X - (S) X / X X B - X X X

D - Wedak	<p>Applicable only for high Eff. Motors 2 = IE2 Motor 3 = IE3 Motor</p> <p>Voltage (Except for 1Ph 230V & 3Ph 380V) D = 220V, K = 415V, N = 525V</p> <p>Method of Starting S: 1Ph - CSCR T: 3Ph - D.O.L D: 3Ph - S.D.</p> <p>Applicable only for high flow models</p>
M - Multistage Pump	
H - Horizontal	
Materials of Construction	
C / S / N / D (Refer Material of Construction Table for detailed MoC)	
Applicable only for 60Hz	
Rated Flow in m³/h 1 - 1m ³ /h, 32 - 32m ³ /h	
Number of Stages x 10	
20 - 2 stage, 40 - 4 stage 35 - 4 stage with trimmed impeller	

In the view of our continuous developments the given information / description / specifications / illustrations are subject to change without prior notice.

Group Performance Curves

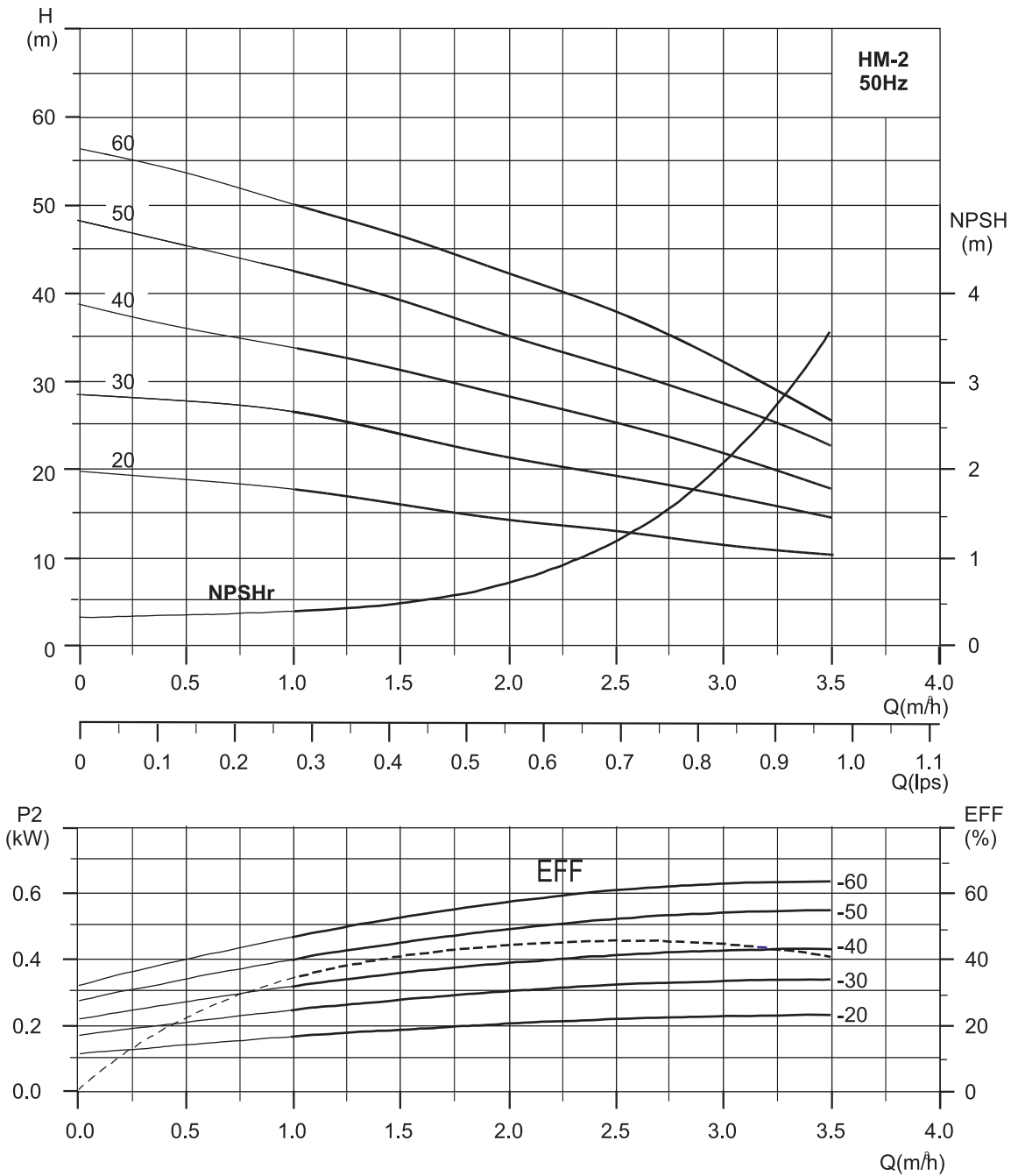


Materials Of Construction

Part Name	HMC	HMS	HMN	HMD
Pump Casing	Cast Iron	Casted SS 304	Casted SS 316	SS 304
Pump Head	Cast Iron	Casted SS 304	Casted SS 316	-
Impeller	SS 304	SS 304	SS 316	SS 304
Diffuser Casing	SS 304	SS 304	SS 316	SS 304
Pump Shaft	SS 304 / 431	SS 304 / 431	SS 316 / 329	SS 304 / 431
Bracket	Aluminum Alloy	Aluminum Alloy	Aluminum Alloy	Aluminum Alloy
Mechanical Seal	Carbon / Ceramic	Carbon / Ceramic	Carbon / Ceramic	Carbon / Ceramic
Pump Base	M.S / C.I.	M.S / C.I.	M.S / C.I.	M.S / C.I.
Sleeve	SS 304	SS 304	SS 316	SS 304
Clamp Holder	SS 304	-	-	SS 304
Clamp Plate	SS 304	-	-	SS 304

In the view of our continuous developments the given information / description / specifications / illustrations are subject to change without prior notice.

HM-2

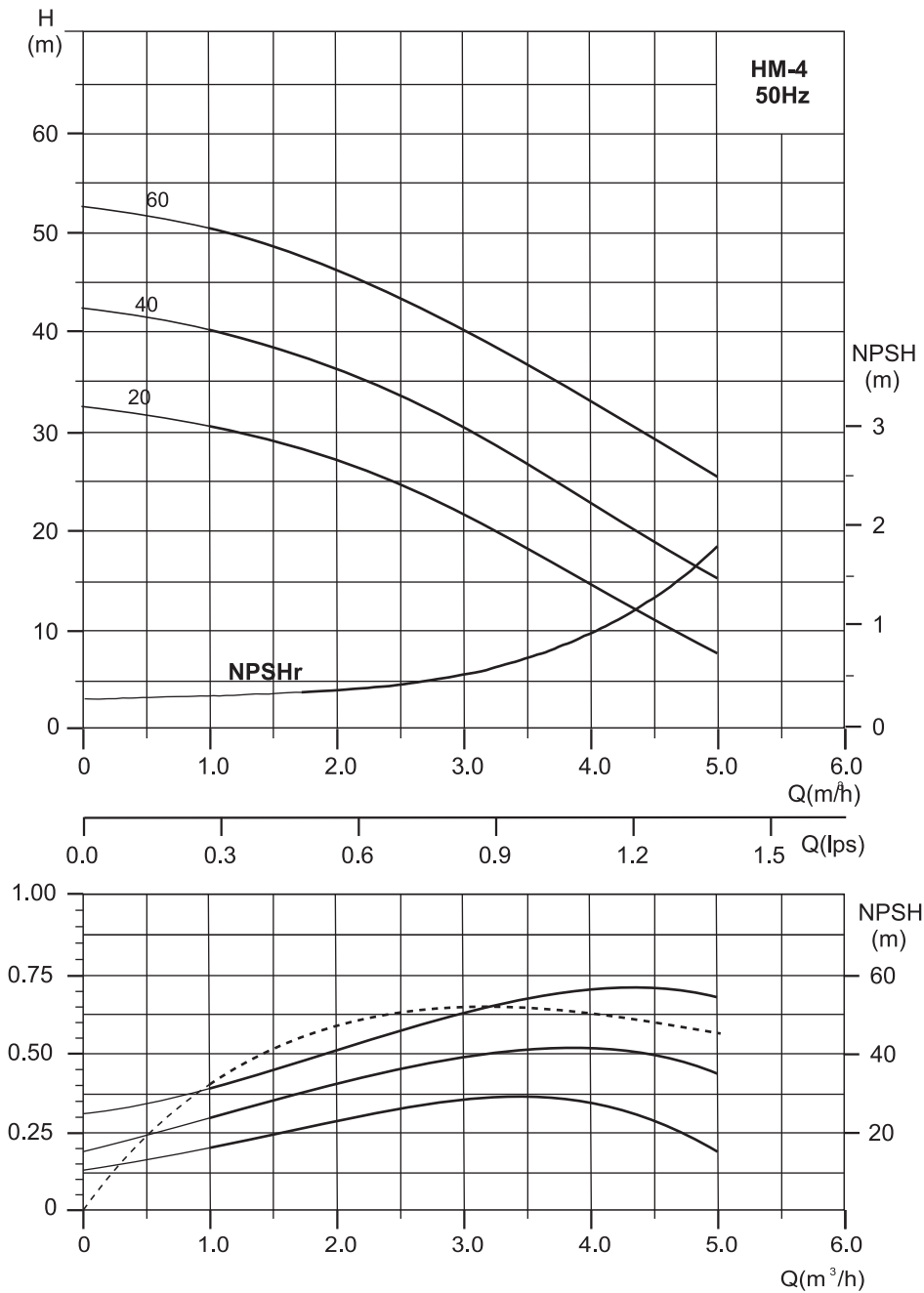


Performance Table

Model		Motor Power P ₂ (kW)	Q (m³/h)	1.0	1.5	2.0	2.5	3.0	3.5
Single Phase	Three Phase								
HM-2/20S	HM-2/20T	0.37	H (m)	18	16	14	13	11	10
HM-2/30S	HM-2/30T	0.37		27	24	21	20	17	14
HM-2/40S	HM-2/40T	0.55		35	32	28	26	23	17
HM-2/50S	HM-2/50T	0.55		43	40	35	33	28	22
HM-2/60S	HM-2/60T	0.75		50	48	42	38	32	25

In the view of our continuous developments the given information / description / specifications / illustrations are subject to change without prior notice.

HM-4

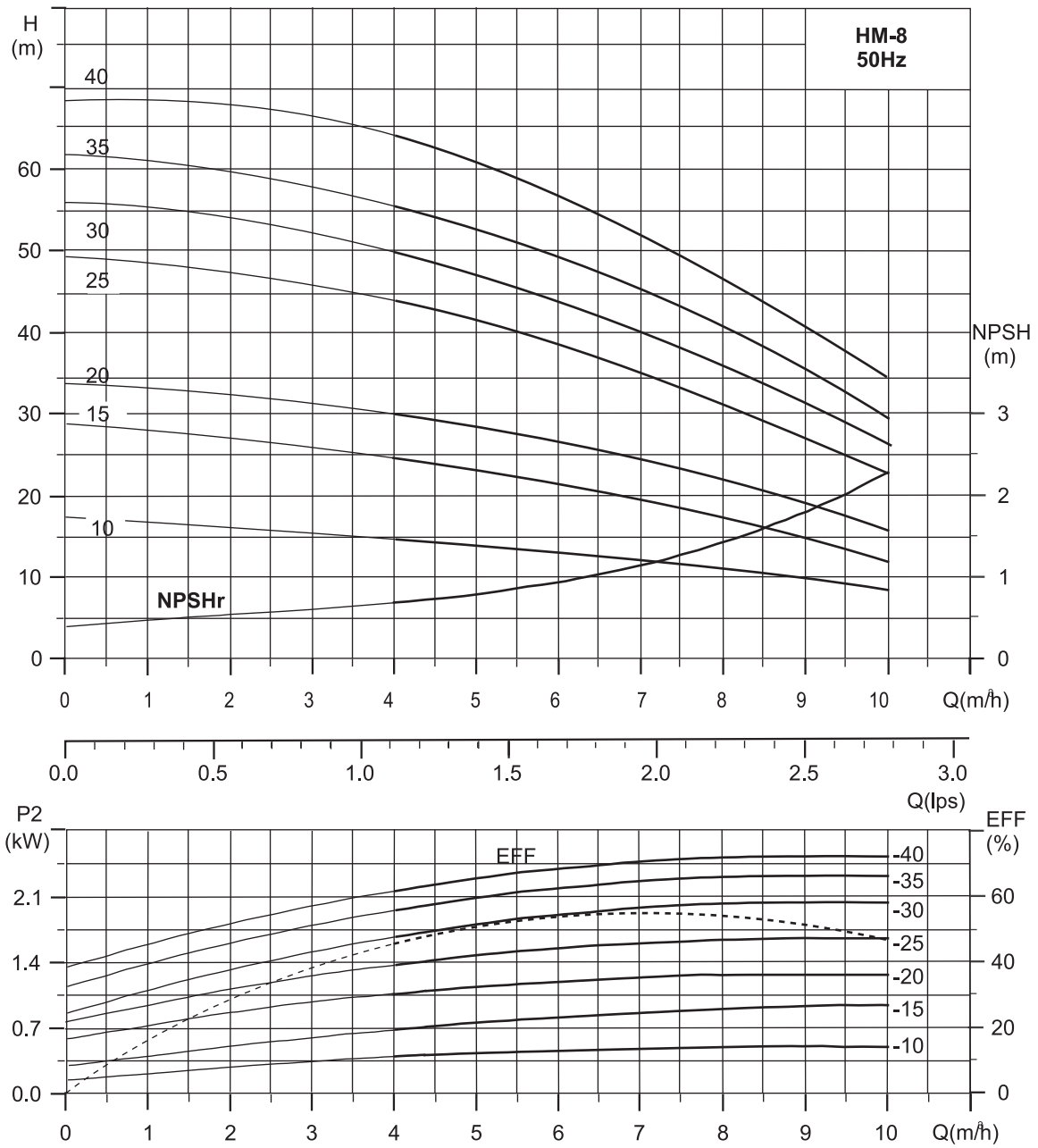


Performance Table

Model		Motor Power P ₂ (kW)	Q (m³/h)	0	1	2	3	4	5
Single Phase	Three Phase								
HM-4/20S	HM-4/20T	0.55	H (m)	32	28	22	18	13	7
HM-4/40S	HM-4/40T	0.75		40	37	34	29	23	16
HM-4/60S	HM-4/60T	1.1		50	47	44	37	31	24

In the view of our continuous developments the given information / description / specifications / illustrations are subject to change without prior notice.

HM-8

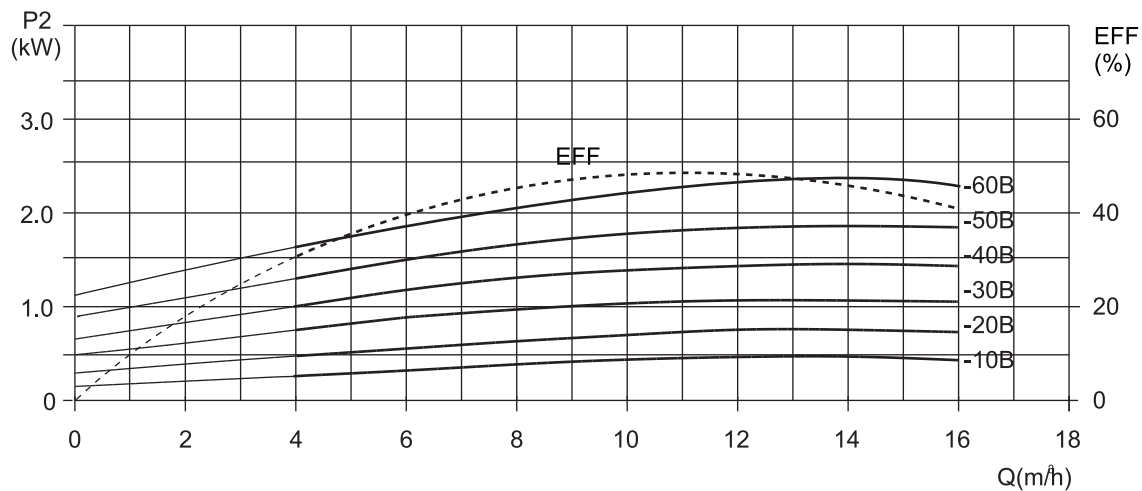
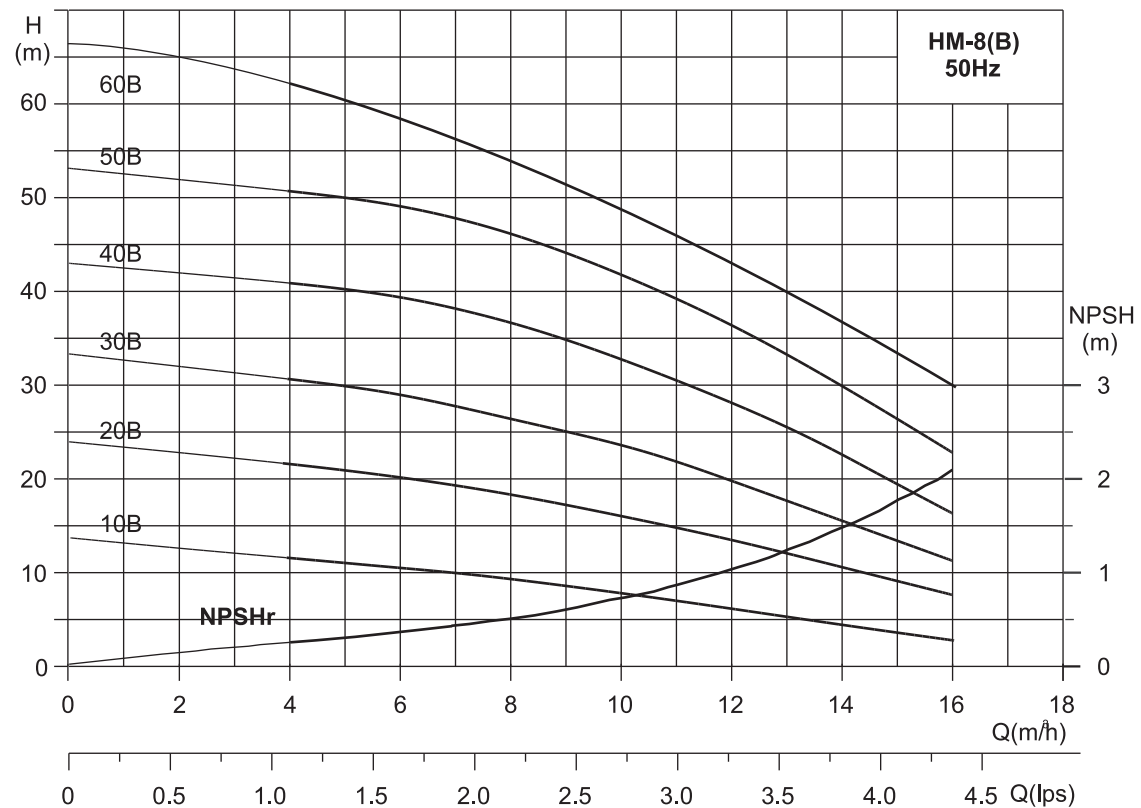


Performance Table

Model		Motor Power P ₂ (kW)	Q (m³/h)	4.0	5.0	6.0	7.0	8.0	9.0	10
Single Phase	Three Phase			H (m)						
HM-8/10S	HM-8/10T	0.55	H (m)	15	14	13	12.5	12	9	8
HM-8/15S	HM-8/15T	0.75		25	23	22	21	20	14	12
HM-8/20S	HM-8/20T	1.0		32	29	27	25	24	21	17
HM-8/25S	HM-8/25T	1.5		43	40	38	34	27	25	20
HM-8/30S	HM-8/30T	1.85		50	46	44	40	36	30	26
HM-8/35S	HM-8/35T	2.2		56	51	48	44	43	35	28
HM-8/40S	HM-8/40T	2.2		64	58	57	50	48	42	34

In the view of our continuous developments the given information / description / specifications / illustrations are subject to change without prior notice.

HM-8(B)

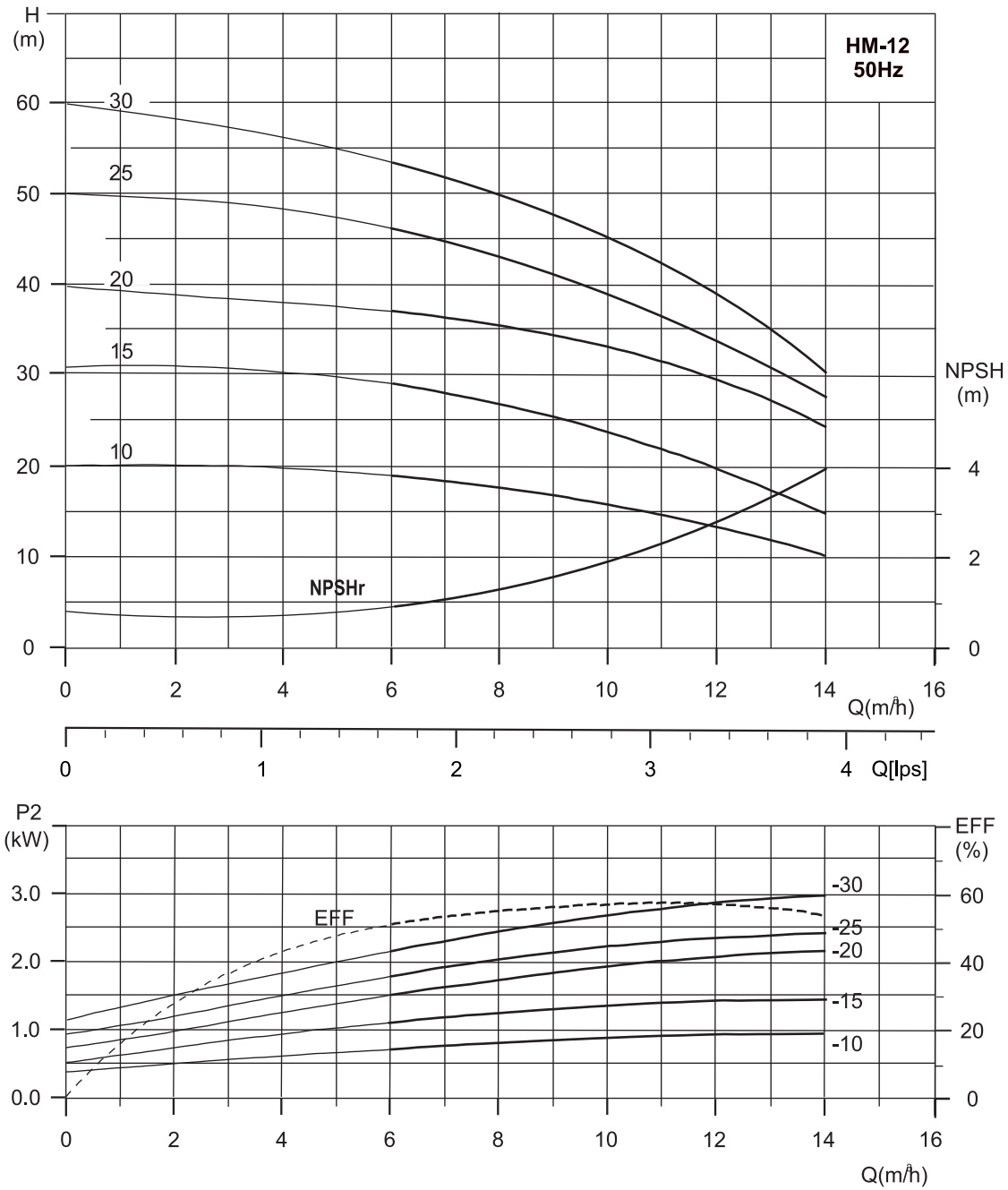


Performance Table

Model		Motor Power P ₂ (kW)	Q (m³/h)	Q (m³/h)						
Single Phase	Three Phase			4.0	6.0	8.0	10	12	14	16
HM-8/10BS	HM-8/10BT	0.55	H (m)	11	10	9	8	7	6	5
HM-8/20BS	HM-8/20BT	0.75		22	20	19	18	13	11	8
HM-8/30BS	HM-8/30BT	1.1		31	29	26	24	20	16	11
HM-8/40BS	HM-8/40BT	1.5		41	39	37	33	28	23	17
HM-8/50BS	HM-8/50BT	2.2		51	49	46.5	42	37	30	23
	HM-8/60BT	3.0		62	58	52	48	42	36	30

In the view of our continuous developments the given information / description / specifications / illustrations are subject to change without prior notice.

HM-12

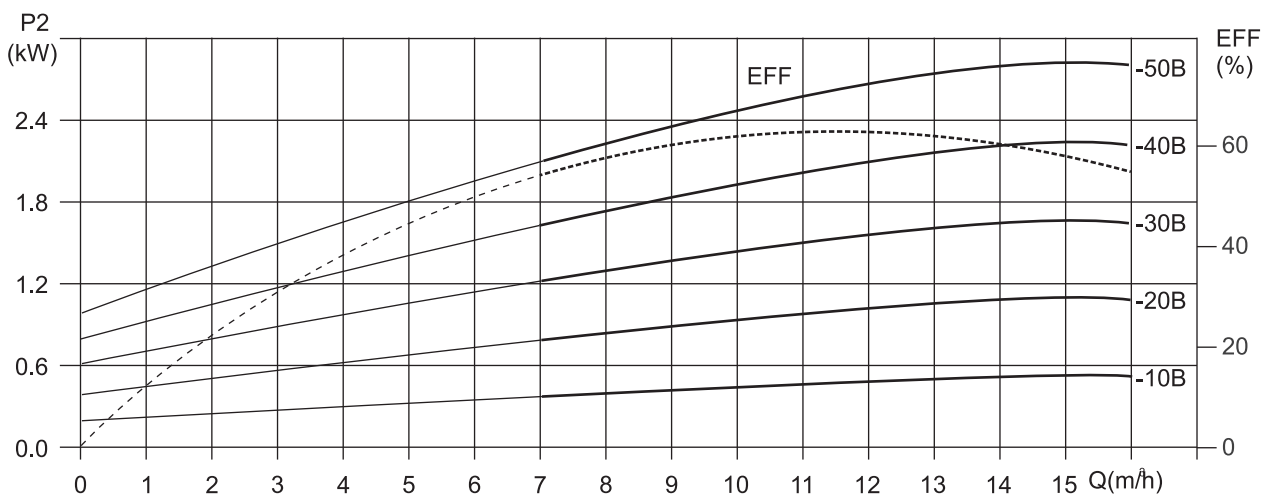
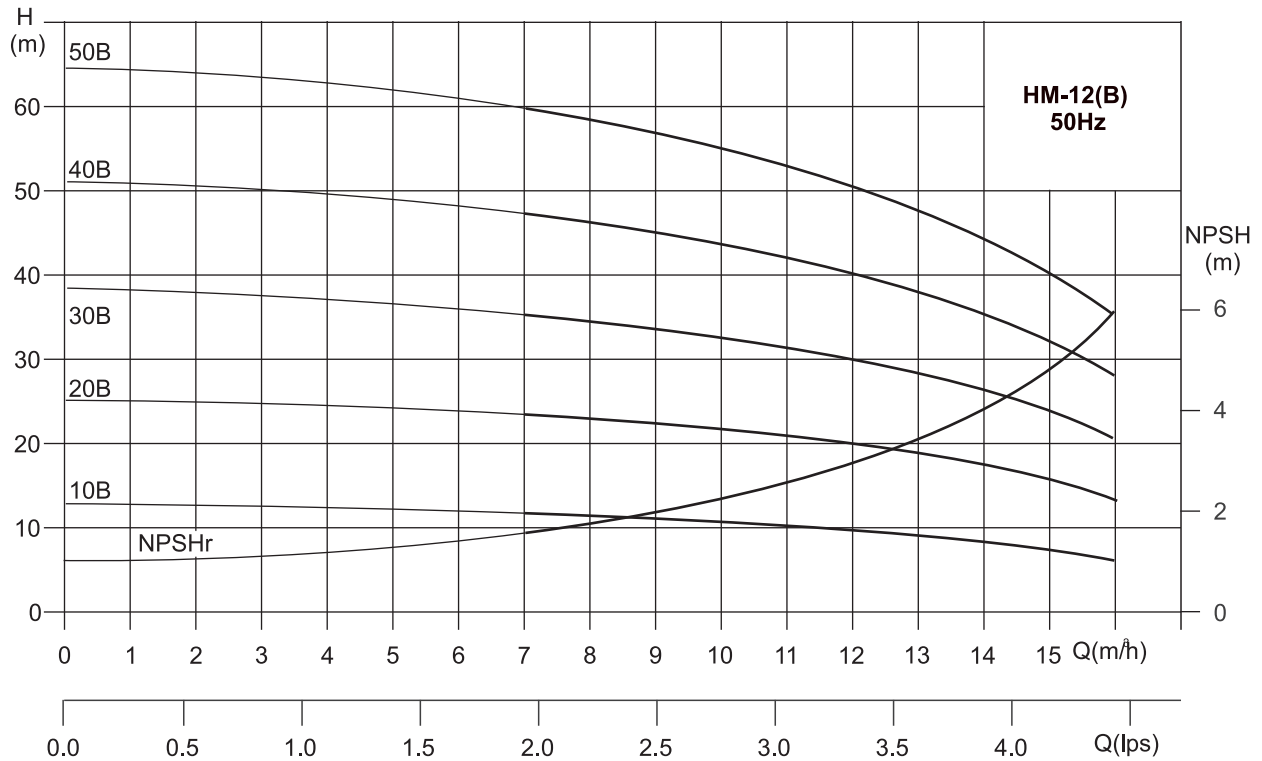


Performance Table

Model		Motor Power P ₂ (kW)	Q (m³/h)	6.0	7.0	8.0	9.0	10	11	12	13	14
Single Phase	Three Phase			H (m)								
HM-12/10S	HM-12/10T	1.0		19	18	17.5	16	15.5	14	13	12	11
HM-12/15S	HM-12/15T	1.5		28	27	26	25	24	22	20	18	15
HM-12/20S	HM-12/20T	1.85		38	36	35	32	31	29	28	24	20
HM-12/25S	HM-12/25T	2.2		47	45	43	42	39	36	34	31	27
	HM-12/30T	3.0		54	52	50	48	45	42	39	35	30

In the view of our continuous developments the given information / description / specifications / illustrations are subject to change without prior notice.

HM-12 (B)

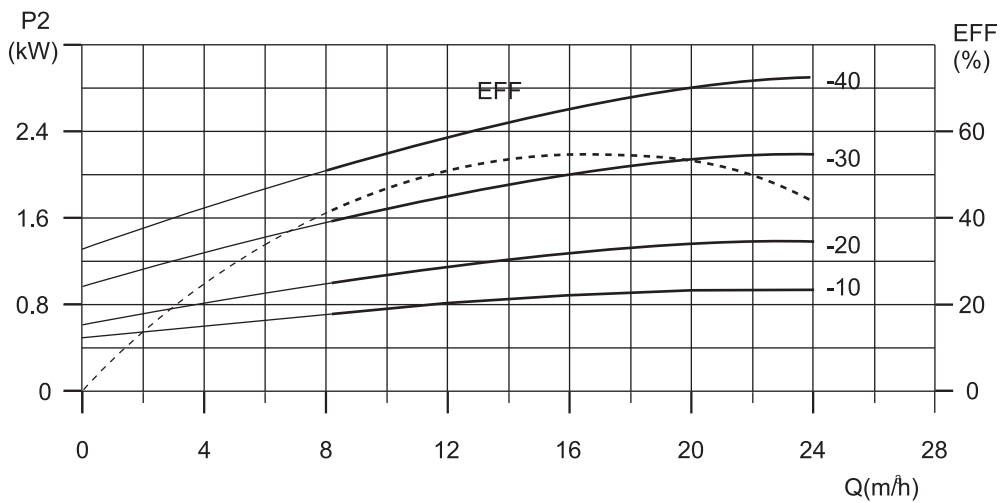
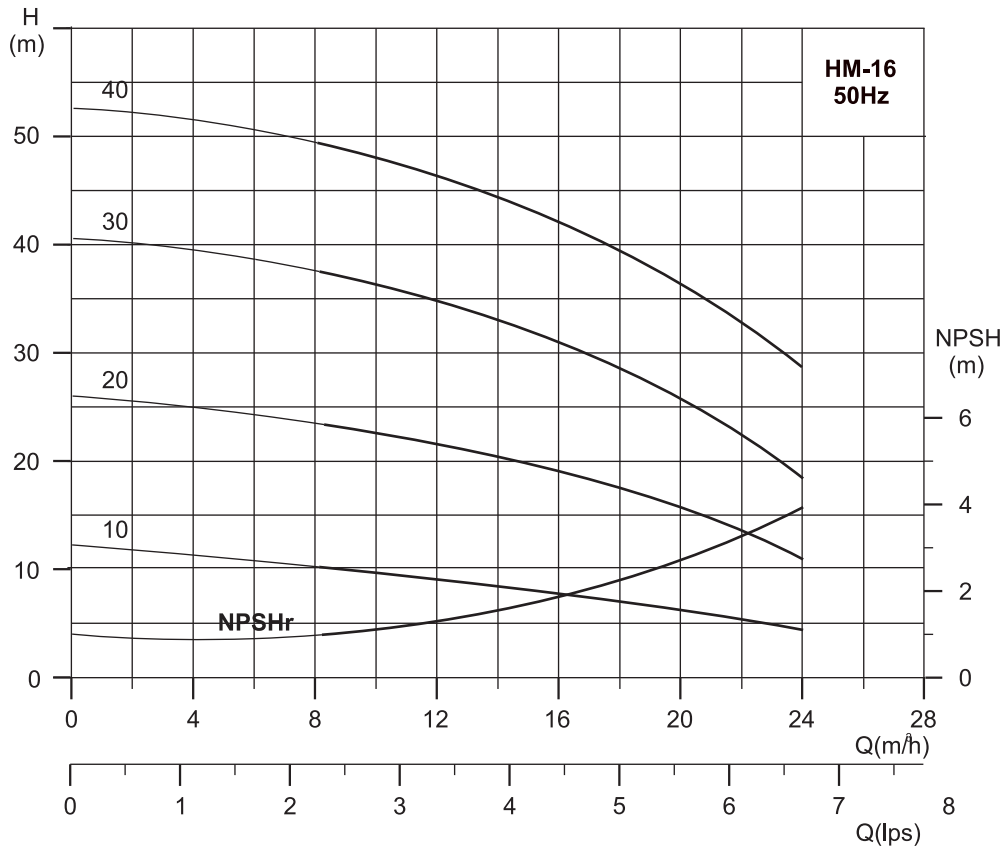


Performance Table

Model		Motor Power P ₂ (kW)	Q (m³/h)	Q (m³/h)										
Single Phase	Three Phase			7.0	8.0	9.0	10	11	12	13	14	15	16	
HM-12/10BS	HM-12/10BT	0.75	H (m)	12	11.5	11	10.5	10	9.5	9	8	7	6	
HM-12/20BS	HM-12/20BT	1.1		23	22.5	22	21	20	19	18	17	16	13	
HM-12/30BS	HM-12/30BT	1.85		35	34	33	32	31	30	28	26	24	20	
HM-12/40BS	HM-12/40BT	2.2		47	46	45	44	42	40	38	35	32	28	
	HM-12/50BT	3.0		60	58	57	55	53	50	47	44	40	35	

In the view of our continuous developments the given information / description / specifications / illustrations are subject to change without prior notice.

HM-16

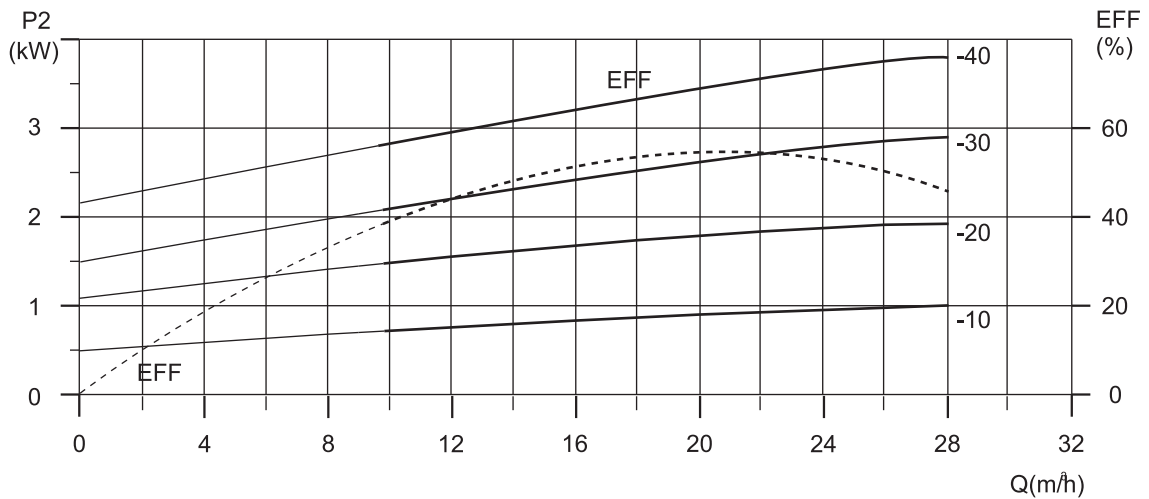
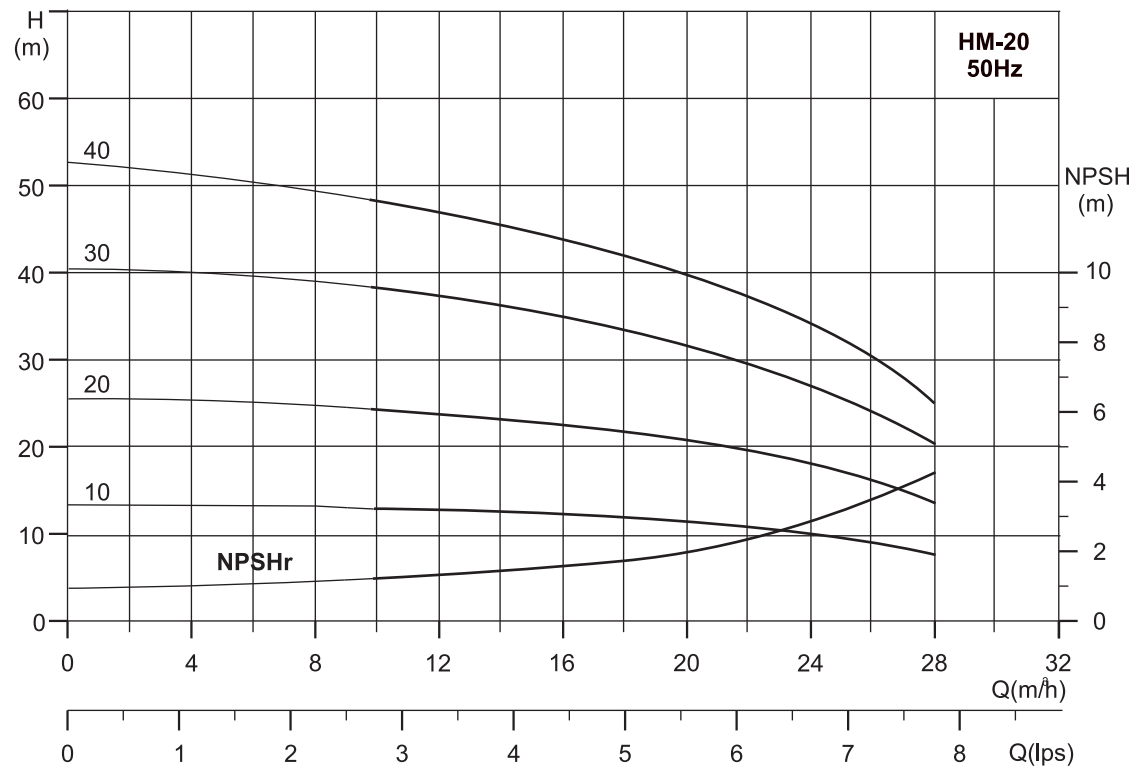


Performance Table

Model		Motor Power P ₂ (kW)	Q (m³/h)	8	10	12	14	16	18	20	22	24
Single Phase	Three Phase			H (m)								
HM-16/10S	HM-16/10T	1.0	H (m)	12	11.5	11	10.5	10	9	8	7	6
HM-16/20S	HM-16/20T	1.5		24	23	22	21	20	19	16	14	12
HM-16/30S	HM-16/30T	2.2		38	36	34	33	30	28	26	23	20
	HM-16/40T	3.0		50	48	46	44	40	38	36	32	28

In the view of our continuous developments the given information / description / specifications / illustrations are subject to change without prior notice.

HM-20

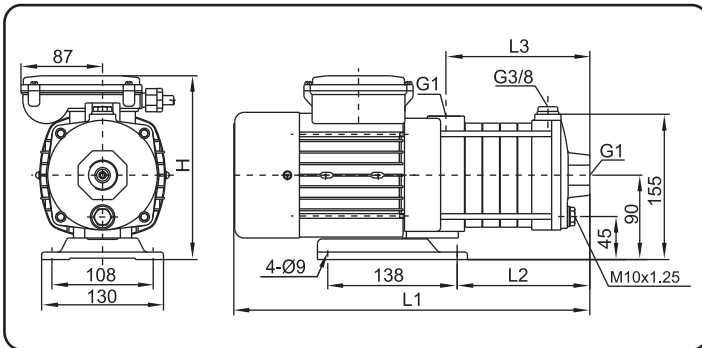


Performance Table

Model		Motor Power P ₂ (kW)	Q (m³/h)	H (m)										
Single Phase	Three Phase			10	12	14	16	18	20	22	24	26	28	
HM-20/10S	HM-20/10T	1.0	H (m)	13	12.5	12	11.5	11	10.5	10	9	8.5	7.5	
HM-20/20S	HM-20/20T	1.85		25	24	23	22	21	20	18	16	14	12	
	HM-20/30T	3.0		39	38	36	35	33	31.5	30	27	24	21	
	HM-20/40T	4.0		50	48	46	44	42	40	36	32	28	24	

In the view of our continuous developments the given information / description / specifications / illustrations are subject to change without prior notice.

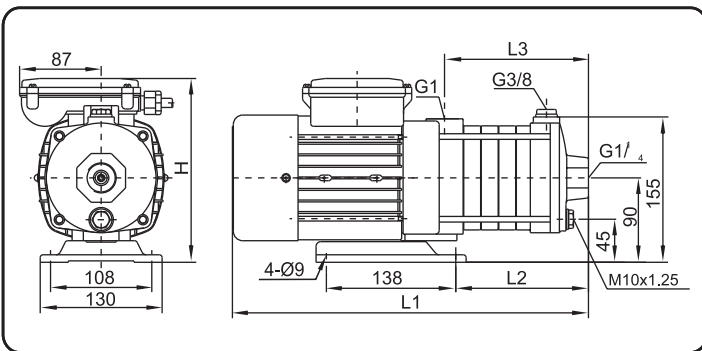
HMC-2



Suc. x Del.: 1" x 1"

Model	Dimensions(mm)								Weight (kg)
	Single Phase				Three Phase				
	L1	L2	L3	H	L1	L2	L3	H	
HMC-2/20S/T	326	70	104	198	326	70	104	194	8.5
HMC-2/30S/T	344	88	122	198	344	88	122	194	9
HMC-2/40S/T	362	106	140	198	362	106	140	194	9.5
HMC-2/50S/T	380	124	158	198	380	124	158	194	10
HMC-2/60S/T	398	142	176	198	398	142	176	194	10.5

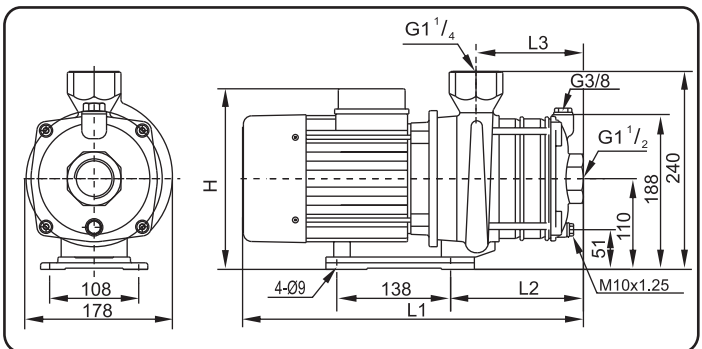
HMC-4



Suc. x Del.: 1" x 1"

Model	Dimensions(mm)								*Weight (kg)
	Single Phase				Three Phase				
	L1	L2	L3	H	L1	L2	L3	H	
HMC-4/20S/T	335	79	113	198	335	79	113	194	9
HMC-4/30S/T	362	106	140	198	362	106	140	194	10
HMC-4/40S/T	389	133	167	198	389	133	167	194	10.5
HMC-4/50S/T	416	160	194	198	416	160	194	194	11
HMC-4/60S/T	443	187	221	198	443	187	221	194	12

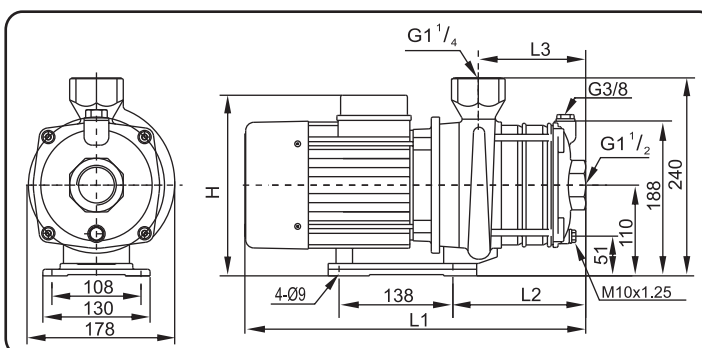
HMC-8



Suc. x Del.: 1 1/2" x 1 1/4"

Model	Dimensions(mm)								*Weight (kg)
	Single Phase				Three Phase				
	L1	L2	L3	H	L1	L2	L3	H	
HMC-8/10S/T	328	73	78	235	328	73	78	214	13
HMC-8/15S/T	358	103	108	235	358	103	108	214	15
HMC-8/20S/T	358	103	108	235	358	103	108	214	18
HMC-8/25S/T	426	133	138	244	426	133	138	222	20
HMC-8/30S/T	468	133	138	230	426	133	138	222	25
HMC-8/35S/T	500	163	168	230	456	163	168	222	30
HMC-8/40S/T	500	163	168	230	456	163	168	222	31

HMC-8B



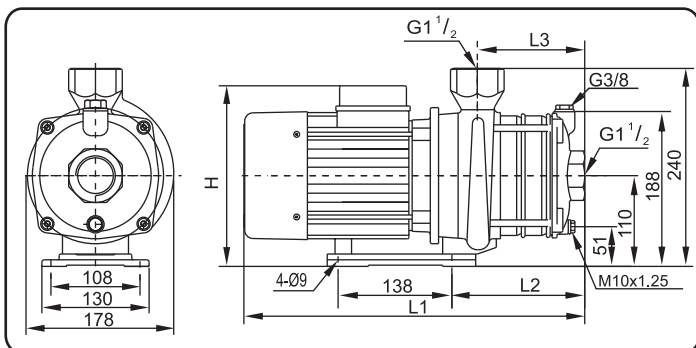
Suc. x Del.: 1 1/2" x 1 1/4"

Model	Dimensions(mm)								Weight (kg)
	Single Phase				Three Phase				
	L1	L2	L3	H	L1	L2	L3	H	
HMC-8/10BS/T	326	73	78	237	326	73	78	216	14
HMC-8/20BS/T	356	103	108	237	356	103	108	216	15
HMC-8/30BS/T	416	133	138	246	416	133	138	222	19
HMC-8/40BS/T	446	163	168	246	446	163	168	222	20
HMC-8/50BS/T	521	193	198	227	476	193	198	222	28
HMC-8/60BS/T	-	-	-	-	568	223	228	227	29

In the view of our continuous developments the given information / description / specifications / illustrations are subject to change without prior notice.

HMC-12

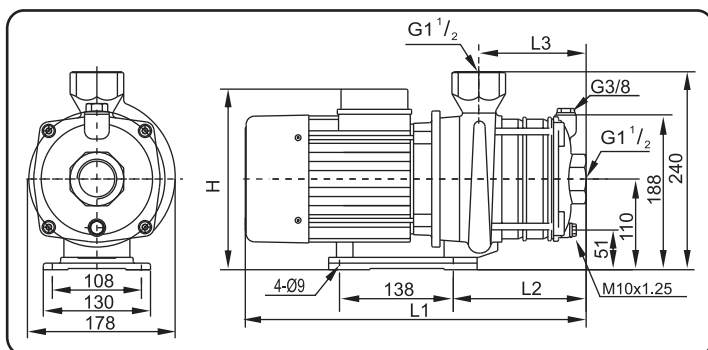
Suc. x Del.: 1½"x1½"



Model	Dimensions(mm)								Weight (kg)
	Single Phase				Three Phase				
	L1	L2	L3	H	L1	L2	L3	H	
HMC-12/10S/T	328	73	78	235	328	73	78	214	15
HMC-12/15S/T	395	103	108	244	395	103	108	222	18
HMC-12/20S/T	436	103	108	230	395	103	108	222	20
HMC-12/25S/T	468	133	138	230	426	133	138	222	24
HMC-12/30S/T	-	-	-	-	485	133	138	230	27

HMC-12B

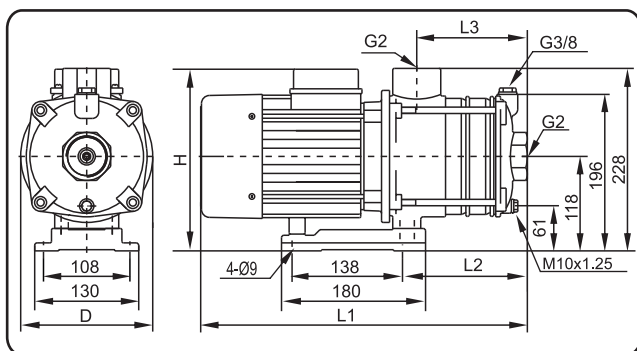
Suc. x Del.: 1½"x1½"



Model	Dimensions(mm)								Weight (kg)
	Single Phase				Three Phase				
	L1	L2	L3	H	L1	L2	L3	H	
HMC-12/10BS/T	330	73	78	237	330	73	78	216	13
HMC-12/20BS/T	395	103	108	246	395	103	108	222	15
HMC-12/30BS/T	467	133	138	227	425	133	138	222	26
HMC-12/40BS/T	497	163	168	227	455	163	168	227	28
HMC-12/50BT	-	-	-	-	544	193	198	227	31

HMC-16

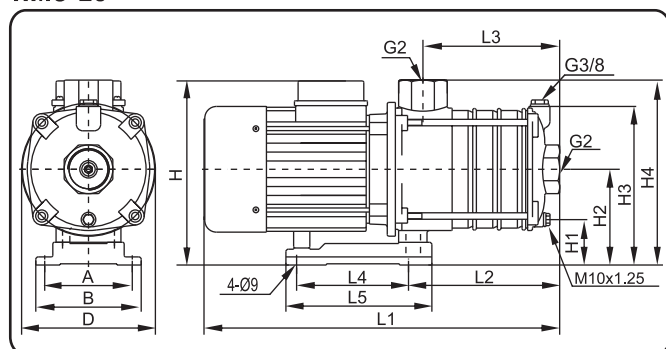
Suc. x Del.: 2"x2"



Model	Dimensions(mm)										*Weight (kg)
	Single Phase					Three Phase					
	L1	L2	L3	H	D	L1	L2	L3	H	D	
HMC-16/10S/T	325	106	81	244	165	325	106	81	218	165	14
HMC-16/20S/T	406	151	126	254	165	406	151	126	228	165	20
HMC-16/30S/T	493	196	171	235	176	493	196	171	235	176	27
HMC-16/40T	-	-	-	-	-	555	241	216	235	176	30

HMC-20

Suc. x Del.: 2"x2"

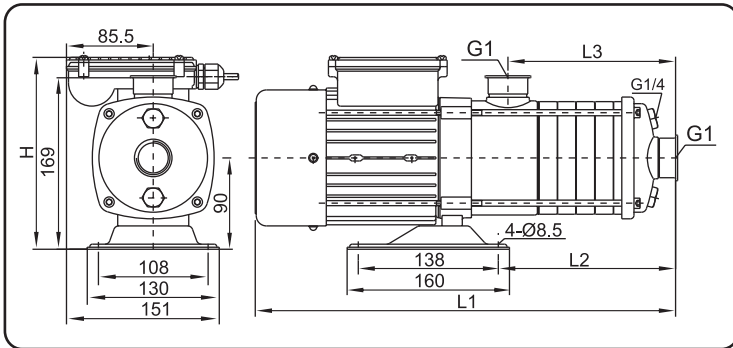


Model	Dimensions(mm)													Weight (kg)
	L1	L2	L3	L4	L5	H	H1	H2	H3	H4	A	B	D	
HMC-20/10S/T	325	106	81	138	180	244	61	118	196	228	108	130	165	16
HMC-20/20S/T	450	151	126	138	180	235	61	118	196	228	108	130	176	26
HMC-20/10S/T	325	106	81	138	180	218	61	118	196	228	108	130	165	15.5
HMC-20/20S/T	406	151	126	138	180	228	61	118	196	228	108	130	165	25.5
HMC-20/30S/T	510	196	171	138	180	235	61	118	196	228	108	130	176	30
HMC-20/40T	575	316	216	140	175	248	43	100	178	210	160	200	195	35

In the view of our continuous developments the given information / description / specifications / illustrations are subject to change without prior notice.

HMS-2 / HMN-2

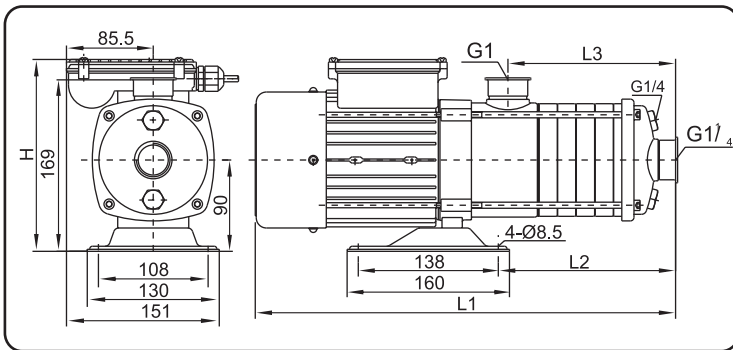
Suc. x Del.: 1"x1"



Model	Dimensions(mm)								Weight (kg)
	Single Phase				Three Phase				
	L1	L2	L3	H	L1	L2	L3	H	
HMS-2/20S/T	342	103	92	189	342	103	92	192	7.5
HMS-2/30S/T	360	121	110	189	360	121	110	192	8
HMS-2/40S/T	378	139	128	189	378	139	128	192	9
HMS-2/50S/T	396	157	146	189	396	157	146	192	10
HMS-2/60S/T	414	175	164	189	414	175	164	192	11

HMS-4 / HMN-4

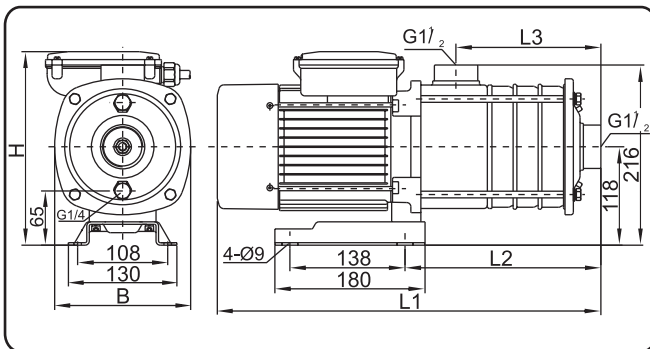
Suc. x Del.: 1¼"x1"



Model	Dimensions(mm)								*Weight (kg)
	Single Phase				Three Phase				
	L1	L2	L3	H	L1	L2	L3	H	
HMS-4/20S/T	342	103	92	189	342	103	92	192	9
HMS-4/30S/T	360	121	110	189	360	121	110	192	10
HMS-4/40S/T	378	139	128	189	378	139	128	192	11
HMS-4/50S/T	396	157	146	215	396	157	146	192	12
HMS-4/60S/T	414	175	164	215	414	175	164	192	13

HMS-8 / HMN-8

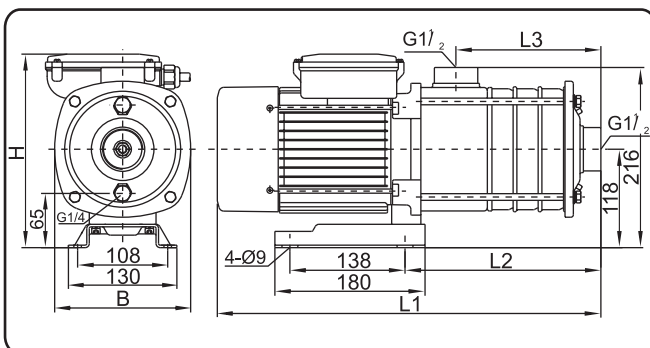
Suc. x Del.: 1½"x1½"



Model	Dimensions(mm)										Weight (kg)
	Single Phase					Three Phase					
	L1	L2	L3	H	B	L1	L2	L3	H	B	
HMS-8/10S/T	340	144	83	227	163	340	144	83	220	163	13
HMS-8/15S/T	370	175	113	227	163	370	175	113	220	163	15
HMS-8/20S/T	370	175	113	227	163	370	175	113	220	163	18
HMS-8/25S/T	432	205	144	235	163	432	205	144	225	163	20
HMS-8/30S/T	474	205	144	262	168	432	205	144	225	163	25
HMS-8/35S/T	504	235	174	262	168	463	235	174	225	163	26
HMS-8/40S/T	504	235	174	262	168	463	235	174	225	163	28

HMS-8B / HMN-8B

Suc. x Del.: 1½"x1½"

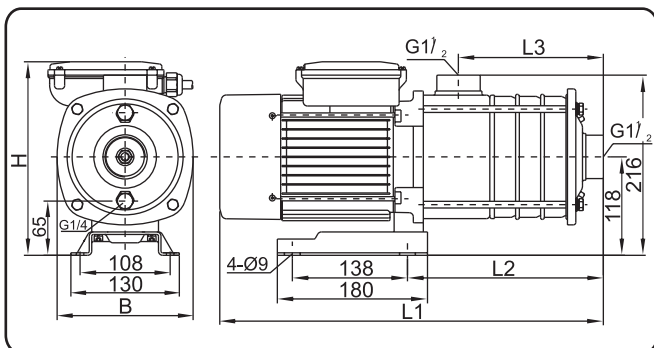


Model	Dimensions(mm)										Weight (kg)
	Single Phase					Three Phase					
	L1	L2	L3	H	B	L1	L2	L3	H	B	
HMS-8/10BS/T	340	144	83	227	163	340	144	83	220	163	14
HMS-8/20BS/T	370	175	113	227	163	370	175	113	220	163	15
HMS-8/30BS/T	432	205	144	235	163	432	205	144	225	163	19
HMS-8/40BS/T	463	235	174	235	16	463	235	174	225	163	20
HMS-8/50BS/T	534	265	204	262	168	493	265	204	225	163	28
HMS-8/60BT	-	-	-	-	-	584	296	234	230	168	31

In the view of our continuous developments the given information / description / specifications / illustrations are subject to change without prior notice.

HMS -12 / HMN -12

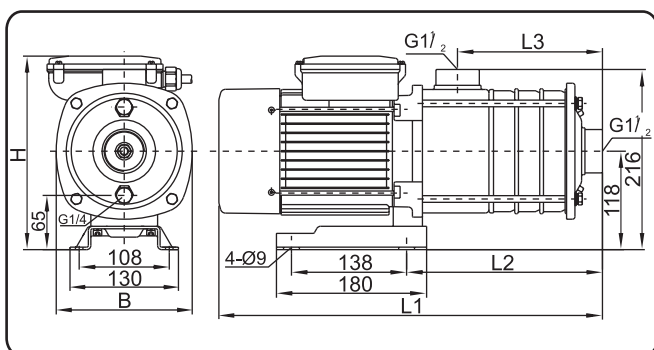
Suc. x Del.: 1½"x1½"



Model	Dimensions(mm)										Weight (kg)
	Single Phase					Three Phase					
	L1	L2	L3	H	B	L1	L2	L3	H	B	
HMS-12/10S/T	340	144	83	227	163	340	144	83	220	163	14
HMS-12/15S/T	402	175	113	235	163	402	175	113	225	163	16
HMS-12/20S/T	444	175	113	262	168	444	175	113	225	163	24
HMS-12/25S/T	474	205	144	262	168	474	205	144	225	163	26
HMS-12/30T	-	-	-	-	-	494	205	144	230	168	28

HMS-12B / HMN-12B

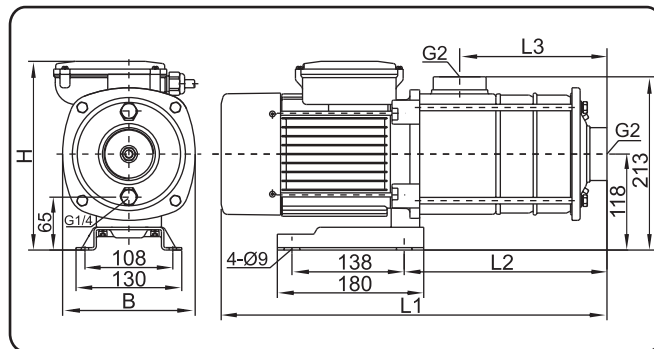
Suc. x Del.: 1½"x1½"



Model	Dimensions(mm)										Weight (kg)
	Single Phase					Three Phase					
	L1	L2	L3	H	B	L1	L2	L3	H	B	
HMS-12/10BS/T	340	144	83	227	163	340	144	83	220	163	13
HMS-12/20BS/T	402	175	113	235	163	402	175	113	225	163	15
HMS-12/30BS/T	474	205	144	262	168	432	205	144	225	168	26
HMS-12/40BS/T	504	235	174	262	168	462	235	174	225	168	28
HMS-12/50BT	-	-	-	-	-	554	265	204	230	168	31

HMS-16 / HMN-16

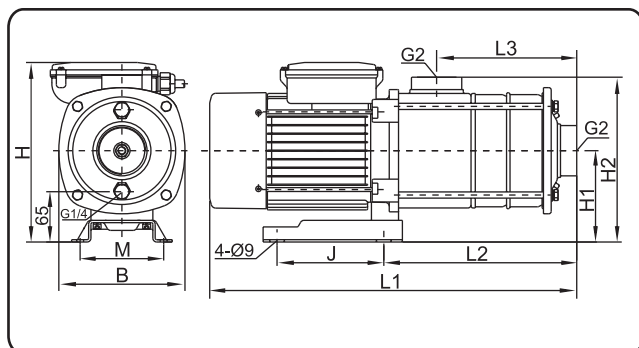
Suc. x Del.: 2"x2"



Model	Dimensions(mm)										Weight (kg)
	Single Phase					Three Phase					
	L1	L2	L3	H	B	L1	L2	L3	H	B	
HMS-16/10 S/T	354	158	90	227	163	354	158	90	220	163	13
HMS-16/20 S/T	431	204	136	235	163	431	204	136	225	163	19
HMS-16/30 S/T	518	249	181	262	168	518	249	181	230	168	26
HMS-16/40T	-	-	-	-	-	563	294	226	230	168	29

HMS-20 / HMN-20

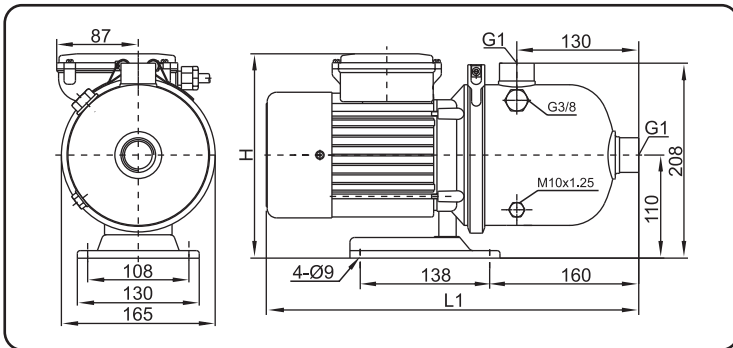
Suc. x Del.: 2"x2"



Model	Dimensions(mm)											Weight (kg)	
	Single Phase						Three Phase						
	L2	L3	M	J	H1	H2	H	L1	B	H	L1		B
HMS-20/10S/T	158	90	108	138	118	213	245	354	163	220	354	163	15
HMS-20/20S/T	204	136	108	138	118	213	262	472	168	225	431	163	25
HMS-20/30T	249	181	108	138	118	213	-	-	-	230	538	168	29
HMS-20/40T	338	226	190	140	132	227	-	-	-	279	602	190	34

In the view of our continuous developments the given information / description / specifications / illustrations are subject to change without prior notice.

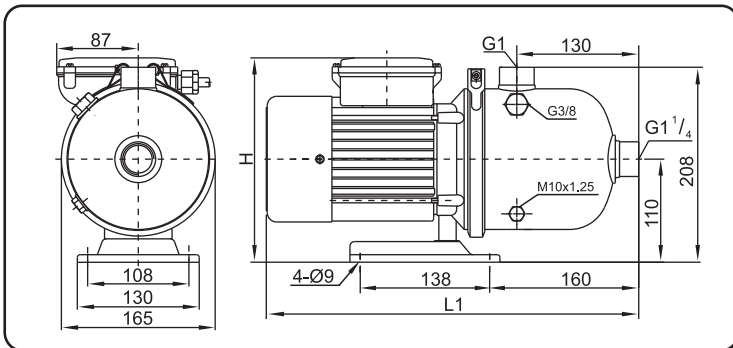
HMD-2



Suc. x Del.: 1" x 1"

Model	Dimensions(mm)				Weight (kg)
	Single Phase		Three Phase		
	L1	H	L1	H	
HMD-2/20S/T	400	217	400	214	8
HMD-2/30S/T	400	217	400	214	8.5
HMD-2/40S/T	400	217	400	214	9.5
HMD-2/50S/T	400	217	400	214	11
HMD-2/60S/T	400	217	400	214	12

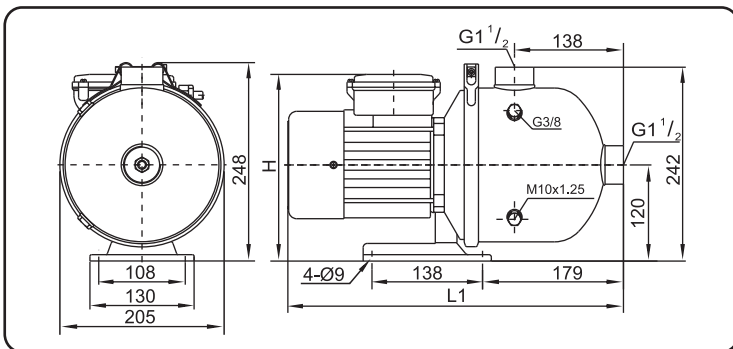
HMD-4



Suc. x Del.: 1 1/4" x 1"

Model	Dimensions(mm)				Weight (kg)
	Single Phase		Three Phase		
	L1	H	L1	H	
HMD-4/20S/T	400	217	400	214	9.7
HMD-4/30S/T	400	217	400	214	11
HMD-4/40S/T	400	217	400	214	11.5
HMD-4/50S/T	400	217	400	214	12.5
HMD-4/60S/T	400	217	400	214	13.5

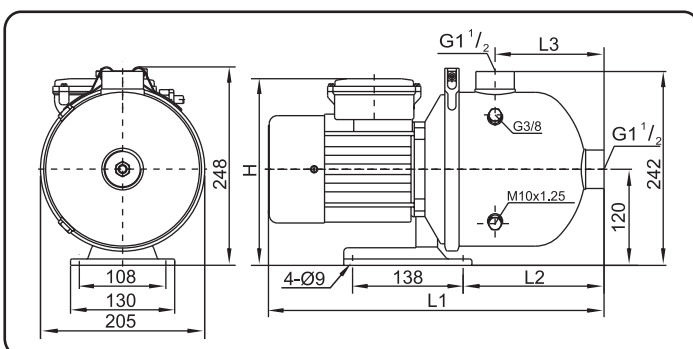
HMD-8



Suc. x Del.: 1 1/2" x 1 1/2"

Model	Dimensions(mm)				Weight (kg)
	Single Phase		Three Phase		
	L1	H	L1	H	
HMD-8/10S/T	424	227	424	222	10.5
HMD-8/15S/T	424	227	424	222	12
HMD-8/20S/T	424	227	424	222	14
HMD-8/25S/T	459	235	459	232	17
HMD-8/30S/T	500	239	459	232	21.5
HMD-8/35S/T	500	239	459	232	23
HMD-8/40S/T	500	239	459	232	24

HMD-8B



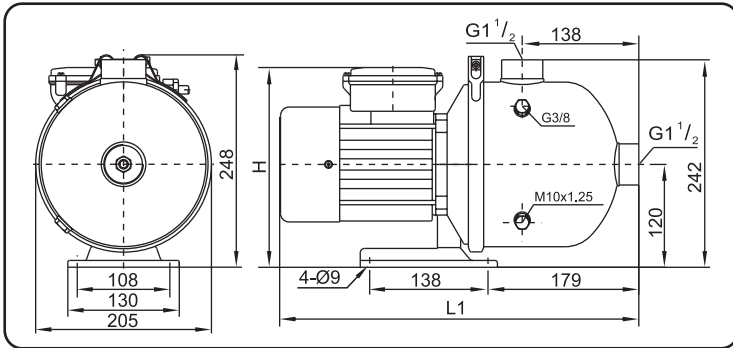
Suc. x Del.: 1 1/2" x 1 1/2"

Model	Dimensions(mm)								Weight (kg)
	Single Phase				Three Phase				
	L1	L2	L3	H	L1	L2	L3	H	
HMD-8/10BS/T	425	180	139	227	425	180	139	224	10
HMD-8/20BS/T	425	180	139	227	425	180	139	224	11.5
HMD-8/30BS/T	455	180	139	235	455	180	139	232	13
HMD-8/40BS/T	455	180	139	235	455	180	139	232	16
HMD-8/50BS/T	566	246	205	239	521	246	205	232	25

In the view of our continuous developments the given information / description / specifications / illustrations are subject to change without prior notice.

HMD-12

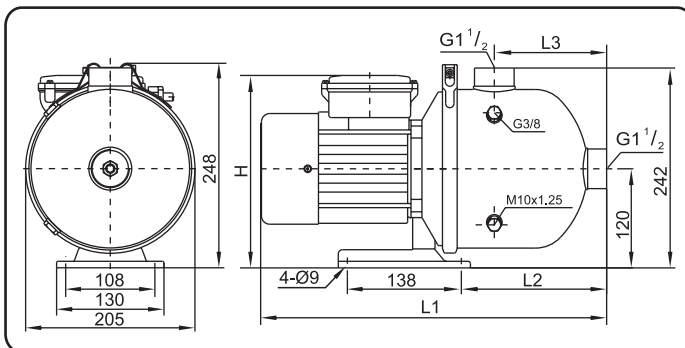
Suc. x Del.: 1½"x1½"



Model	Dimensions(mm)				Weight (kg)
	Single Phase		Three Phase		
	L1	H	L1	H	
HMD-12/10S/T	424	227	425	222	12
HMD-12/15S/T	459	235	459	232	13.5
HMD-12/20S/T	500	239	459	232	21
HMD-12/25S/T	500	239	459	232	24
HMD-12/30T	-	-	518	239	27

HMD-12B

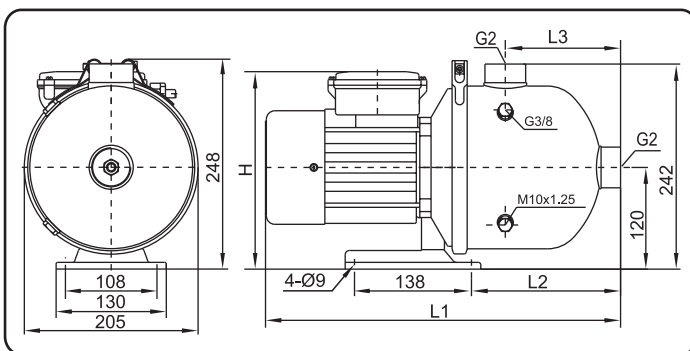
Suc. x Del.: 1½"x1½"



Model	Dimensions(mm)								Weight (kg)
	Single Phase				Three Phase				
	L1	L2	L3	H	L1	L2	L3	H	
HMD-12/10BS/T	425	180	139	227	425	180	139	224	11
HMD-12/20BS/T	458	180	139	235	455	180	139	232	13
HMD-12/30BS/T	500	180	139	239	455	180	139	232	23
HMD-12/40BS/T	500	180	139	239	455	180	139	232	24
HMD-12/50BT	-	-	-	-	583	246	205	239	27

HMD-16

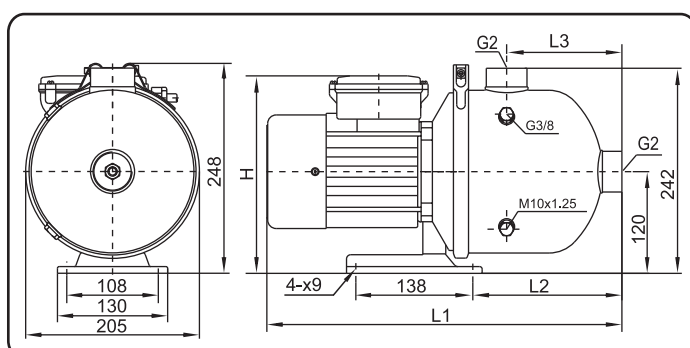
Suc. x Del.: 2"x2"



Model	Dimensions(mm)								Weight (kg)
	Single Phase				Three Phase				
	L1	L2	L3	H	L1	L2	L3	H	
HMD-16/10S/T	425	175	136	245	425	175	136	224	13.5
HMD-16/20S/T	455	175	136	254	455	175	136	232	17
HMD-16/30S/T	520	201	162	239	480	201	162	232	23

HMD-20

Suc. x Del.: 2"x2"



Model	Dimensions(mm)								Weight (kg)
	Single Phase				Three Phase				
	L1	L2	L3	H	L1	L2	L3	H	
HMD-20/10S/T	425	175	136	245	425	175	136	224	20
HMD-20/20S/T	498	175	136	239	455	175	136	232	22
HMD-20/30T	-	-	-	-	540	201	162	239	25

In the view of our continuous developments the given information / description / specifications / illustrations are subject to change without prior notice.



WEDAK PUMPS FZC.
Business Center,
Sharjah Publishing City Free Zone,
Sharjah, United Arab Emirates

B-HM1-B23-E1

